

## Why?

Originally designed as an entry-level restroom, the Global has evolved into an extremely cost-effective restroom with a rich assortment of unique benefits. The patented Dirt Buster™ base with its open-grid floor design allows three times as much fresh air to circulate throughout the restroom. In addition, users have a convenient corner shelf, an extra roll of toilet paper and a large door latch that can be operated with the elbow rather than by hand to help prevent the spread of germs. There is also a “hover handle” on the inside of the door for use by those who do not wish to sit directly on the seat.

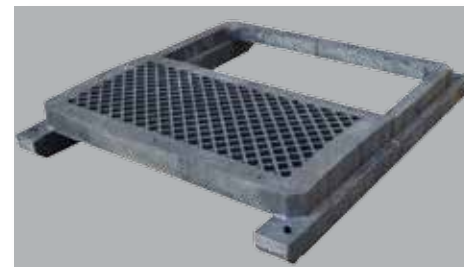
With a lower initial investment, operators might believe quality could be an issue. The fact is Global restrooms have a sturdy framework featuring an incredibly strong, one-piece continuous door frame. The latest upgrades also increased the side panel thickness by an additional 12%, and the tank and urinal are larger, stronger and easier to clean. While you might think of the Global as an entry-level restroom, it easily competes with any restroom for quality and durability.

## Colors



## Features

The Dirtbuster™ base has an open grid pattern, which allows up to three times more air to flow through the restroom. The floor also remains cleaner, with dirt and mud falling through the grid to the ground below.



The three-roll toilet paper dispenser allows for you to put two full rolls plus one partial to help eliminate waste.



## Specs

Height	88" (2235 mm)
Width	44" (1118 mm)
Depth	48" (1219 mm)
Door Opening	24" w (609 mm) x 72" h (1829 mm)
Floor Area	784.2 in <sup>2</sup> (5061 cm <sup>2</sup> )
Tank Volume	70 gal. (265 L)
Seat Height	19.25" (489 mm)
Weight	170 lbs. (77 kg)