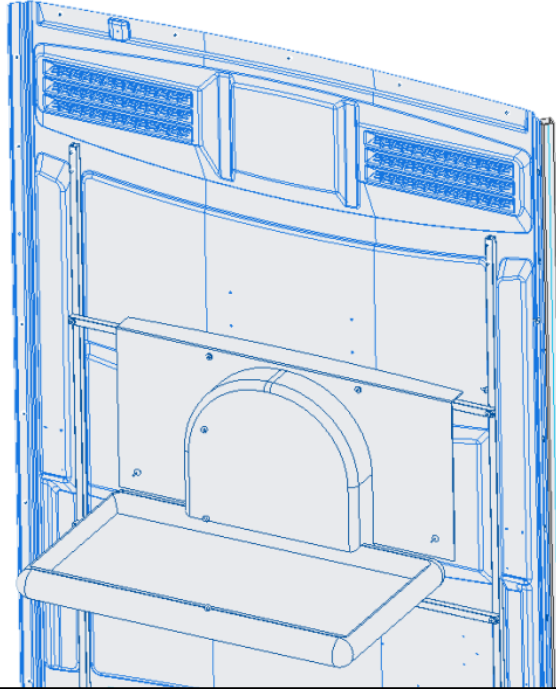


BABY CHANGING STATION KIT 24362

INSTALLATION INSTRUCTIONS (LIBERTY / FREEDOM 4)



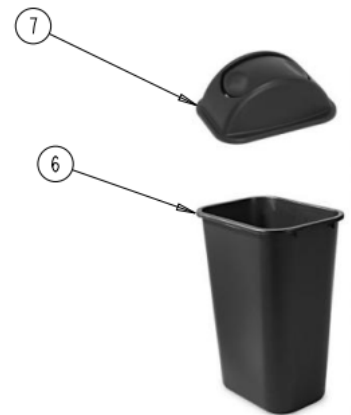
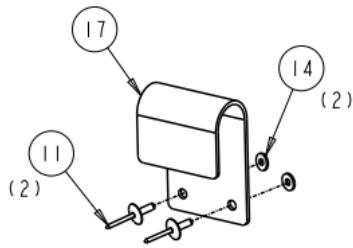
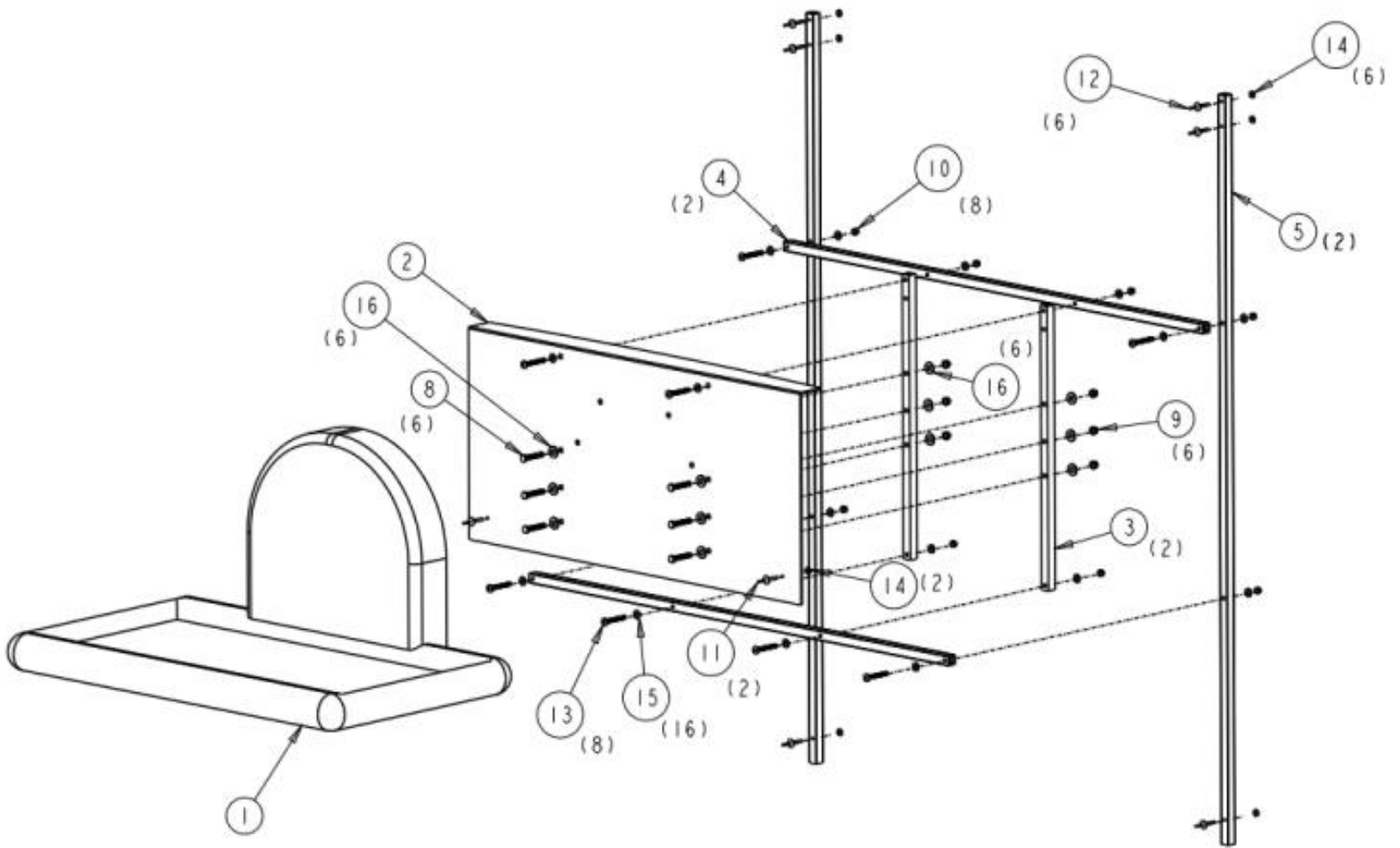
NOTES:

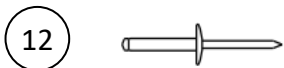
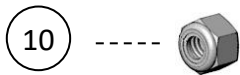
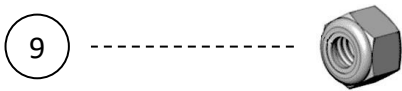
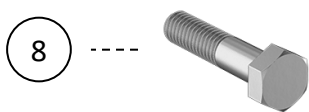
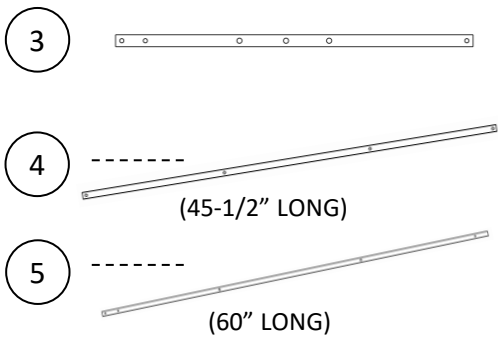
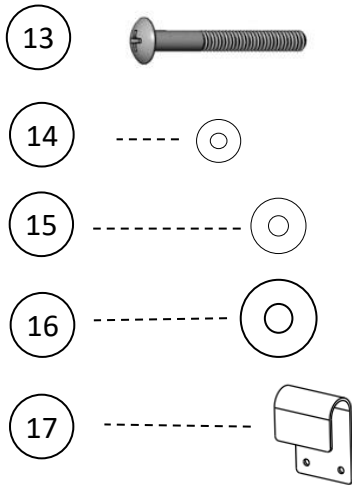
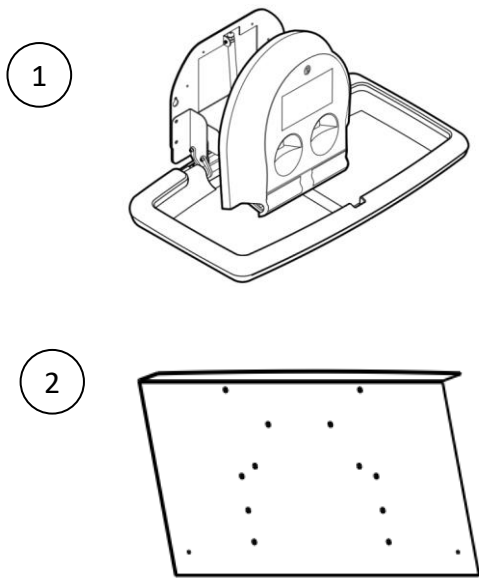
- INSPECT BABY CHANGING STATION & SUPPORTS REGULARLY.
- SPECIAL CARE MUST BE TAKEN WHILE TRANSPORTING RESTROOM. DO NOT BEND SIDE PANELS, *PERMANENT DAMAGE TO BABY CHANGING STATION MAY OCCUR.*
- TIGHTEN STAINLESS STEEL NUTS TO STAINLESS STEEL BOLTS OR SCREWS SLOWLY SO THEY DO NOT SEIZE.
- MAINTAIN STRONG GRIP WHEN FASTENING SCREWS WITH PHILIPS SCREWDRIVER TO MINIMIZE CHANCE OF STRIPPING THE HEAD.
- FAILURE TO FOLLOW THESE INSTRUCTIONS CAN CREATE A SAFETY HAZZARD.



2530 Xenium Lane North, Minneapolis, MN 55441
Telephone: 763-553-1900 Fax: 763-553-1905
800-328-3332 / www.satelliteindustries.com

EXPLODED DRAWING





24363 HDWE- LIB/FRDM4 BABY STN 300			
17	22756	1	BRACKET- TRASH CAN
16	11368	12	WASHER- 5/16 FLAT STNLS
15	12382	16	WASHER- 1/4 FLAT STNLS
14	11315	10	WASHER- 3/16 RIVET STNLS
13	21803	8	SCREW- 1/4-20 X 2-1/4 TRUSS SS
12	18798	6	RIVET- #616 AAL POP
11	11030	4	RIVET- #66 AAL POP
10	16307	8	NUT- 1/4-20 NYLOC STNLS
9	20840	6	NUT- 5/16-18 NYLOC STNLS
8	23489	6	BOLT- 5/16-18 X 2 HXHD STNLS

	24363	1	HDWE- LIB/FRDM4 BABY STN 300
7	8005-602-L	1	TRASH CAN LID: BLK FOR FAMILY UNIT
6	8005-602	1	TRASH CAN: BLK FOR FAMILY UNIT
5	24400	2	TUBE- VERT LIB/FRDM4 BABY 300
4	24399	2	TUBE- HORZ LIB/FRDM4 BABY 300
3	24360	2	TUBE- VERT BRACE BABY STN 300
2	24361	1	PANEL- FILLER LIB/FRDM4 BABY
1	24231	1	BABY CHANGING STATION 300 STYLE

TOOLS:

- CORDLESS DRILL
- POP RIVET GUN

- PHILLIPS SCREWDRIVER
- 1/2" WRENCHES
- 7/16" WRENCH

- 5/16 DRILL BIT
- 1/4" DRILL BIT
- #10 (5mm) #DRILL BIT

1. INSTALL TWO VERTICAL TUBES

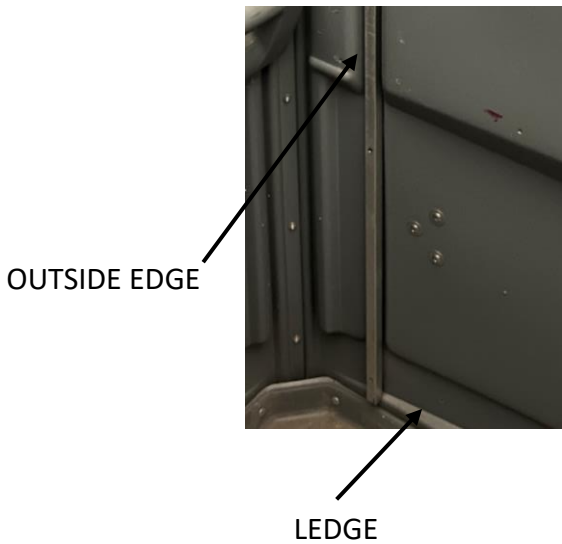


(2 PEOPLE REQUIRED TO ASSEMBLE)

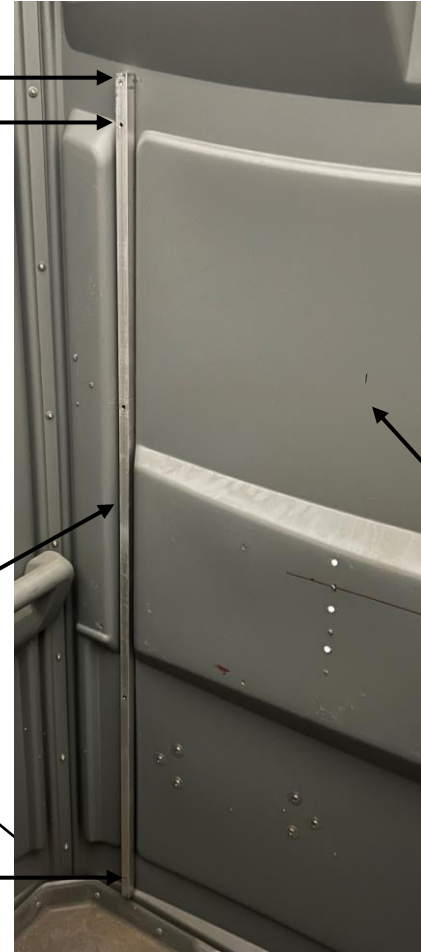
- Place Vertical Tube #24400 on Left side Panel, *INSIDE*, with tube bottom on ledge and against outside edge.
- Hold Tube in place and transfer drill through top (2) holes and bottom rivet hole using #10 drill bit.
- NOTE: The End with 2 holes is on top.



3x

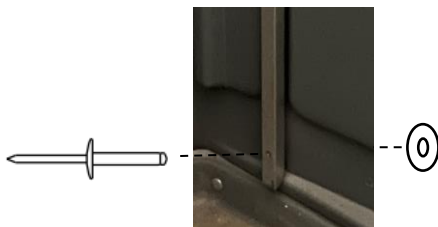
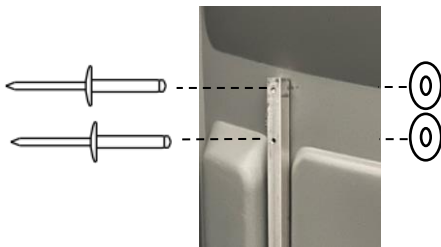


OUTSIDE EDGE



RIGHT SIDE PANEL

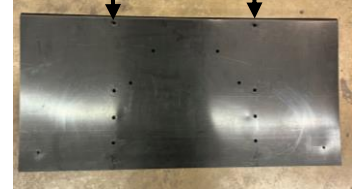
- Install (3) Rivets #18798 from inside with (3) Washers # 11315 on outside of panel.
- Repeat on the Right side.



2. ASSEMBLE HORIZ TUBES, VERT BRACES & PANEL FILLER



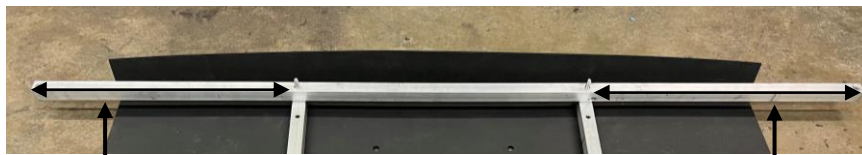
- Place (2) #21803 screws and #12382 washers in top holes in #24361, then lay #24361 on floor with screws sticking up.
- Place (1) #21803 screws and #12382 washers in #24360 bottom hole, threads up.



- Fit #24360 top hole on to #21803 screws in #24361, repeat.



- Fit #24399 on top #24360, long side on right. Repeat on bottom.



SHORTER SIDE (13.5")

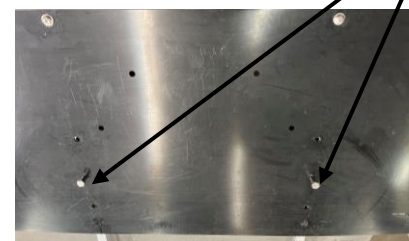
LONGER SIDE (15.2")



- Place #16307 nut & #12382 washer on each (4) #21803 screw.



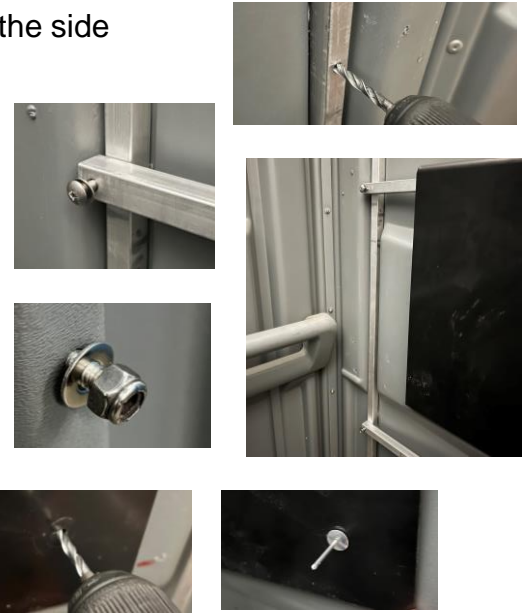
- Place #16307 & #12382 on each (4) #21803.
 - For alignment place #23489 in holes shown.
- Tighten using Philips screwdriver and 7/16 wrench.
- You might want to flip the assembly over to access the screw heads for tightening.



3. ASSEMBLE SUPPORT ASSEMBLY TO VERTICAL TUBES



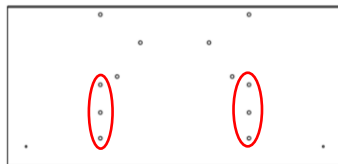
- Transfer drill through the middle holes in #24400 through the side panel, using 1/4" drill bit. (4 places)
- Fit the support assembly on to the vertical tubes with #21803 screw and #12382 washer.
- Secure this assembly by placing #12382 washer and #16307 nut on outside of unit.
- Tighten #12382 washer and #16307 nut to hold in place. (4 places)
- Transfer drill 2 small holes in filler panel through the side panel with #10 drill bit.
- Rivet #24361 to side panel with #11030 rivet on inside and #11315 washer on the outside (2 places).



4. INSTALL THE KOALA BABY CHANGING STATION



- Transfer drill through the 6 vertical holes in #24361, using 5/16" drill bit.
- Place #23489 bolt & #11368 washer in each of the top holes.
- Place #11368 washer & #20840 nut on back of each #23489 bolt outside of unit.
- Tighten with 5/16 wrench #20840 nut until 1/4-1/2" gap.



- Place the Baby Changing Station on 2 exposed #23489 bolt.



- Place #23489 bolt & #11368 washer in the remaining 4 holes.
- Place #11368 washer & #20840 nut on back of each #23489 bolt, outside of unit.
- Tighten all 6 of the #20840 nuts with 5/16 wrench to secure Baby Changing Station.

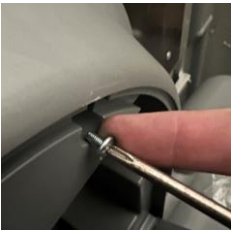


5. SECURING THE PLASTIC COVER

- Use the Koala provided key to open the hatch.



- Use the screws provided by Koala to secure the plastic cover to the steel framework.
- Tighten screws using a Philips screwdriver as shown.



- Use the key to lock the plastic cover in place.

6. INSTALL TRASH CAN

- Locate Trash Can in left front corner of Restroom. Preferred location for wheelchair access to door.
- Mark first hole, location 17-1/8" above floor and 1-1/2" from *any obstructions*.
- Drill hole with #10 drill bit.
- Align Bracket #22756 with hole and rivet from inside, using Rivet #11030 & Washer #11315 *outside*.
- Level Bracket as shown and Transfer drill second hole.
- Repeat riveting process.
- Place Trash Can #8005-602 lip under Bracket & install Lid #8005-602-L

