

Laundry Trailer Winterizing

Water supply

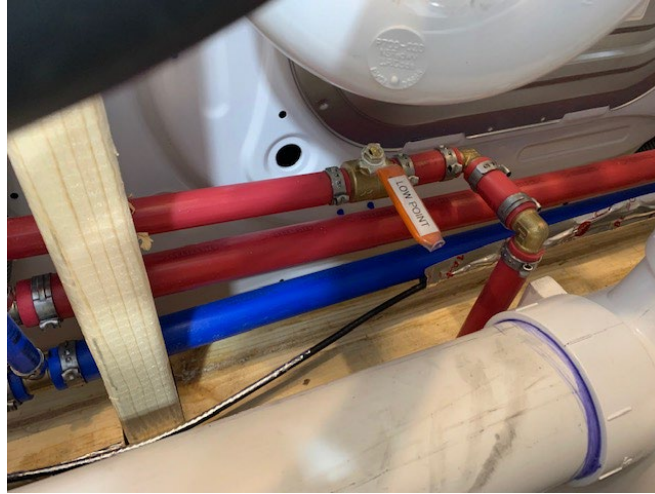
1. Drain fresh water tank.
2. Drain pressure tank by running faucets.
3. Turn off hot and cold water supply valves to all washers.
4. Disconnect hot and cold water supply hoses at the point of connection at the washers and drain the excess water out thru service doors.
5. Drain each washer
 - a. Shop vac
 - b. Leave drain open
 - c. Location



6. Turn tank fill valve off.
7. Turn on water heater bypass valves.
8. Turn off cold and hot lines to water heaters.
9. Turn main supply valve off.
10. Connect air line to city fill, Max. 40 PSI
11. Turn tank fill valve on.
12. Turn power on to float switch and run air thru it until line is water free.
13. Turn tank fill valve off.
14. Turn power off to float switch.
15. Turn on one faucet on



16. Turn main supply valve on
17. Turn the other faucet on and run until nothing but air comes out.
18. Turn off faucets.
19. Turn on hot and cold water low point drains and run until nothing but air comes out.
 - a. There is (3) total, (1) cold and (2) hot



20. Unit is blown out
21. Open everything up
 - a. Faucets
 - b. Low point drains
 - c. Open water pump drain
 - d. Water heater pop off valve hot/cold lines.

Waste Tank

1. Drain waste tank.
2. Pour ½ gallon RV antifreeze into each washer p-trap.

